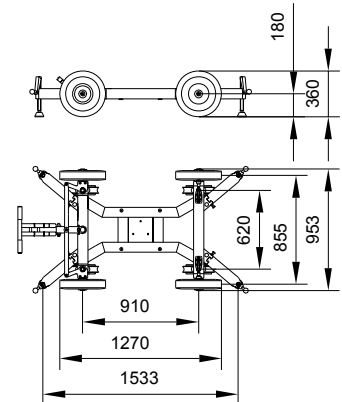
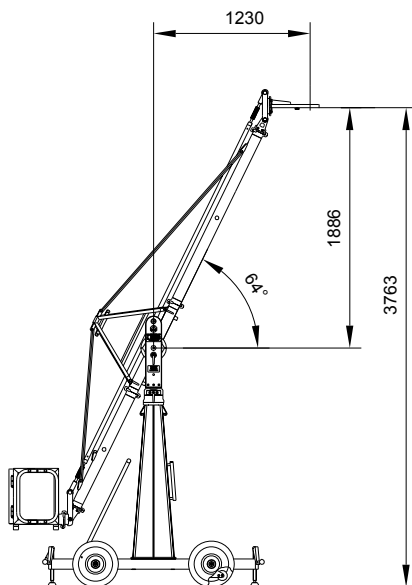


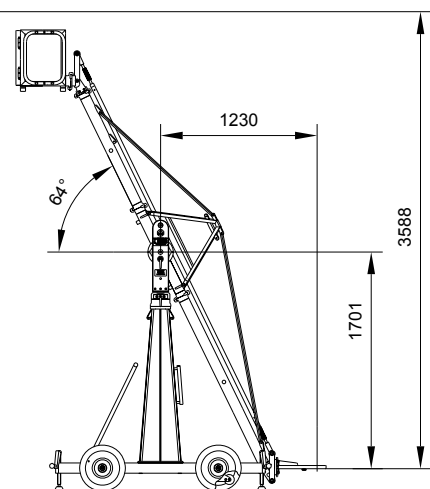
Horizontal position



Dolly (Dimensions are the same in all versions)



Highest position



Lowest position

Pivot height 1877 mm

Rear extension arm required 1000 mm

All measurements are mm !

Front extension arms required	1x1500 mm	Transport height of middle section, assembled	2127 mm
	--	Transport height of rigging harness assembled	ca.2393 mm
	--	Counterweight required to balance empty arm	--
Rear extension arm required	1x 1000 mm	Max. lift capacity (Working load)	45kg
Total lift range	3588 mm	Counterweight required vor max. load	4x14kg=56kg
Maximum height	3763 mm		
Arm reach (pivot to camera head mount)	2351 mm	Dolly weight	112 kg
Length of rear end (pivot to outside of weight bucket)	1976 mm	Crane weight (excluding dolly and weights)	88 kg
Pivot height	1877 mm	Transport weight excluding counterweight	200 kg



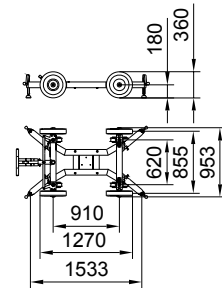
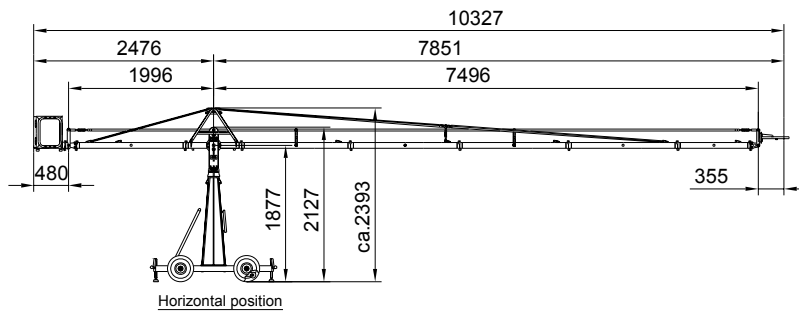
GF-9 Specifications

Version 1/100 D

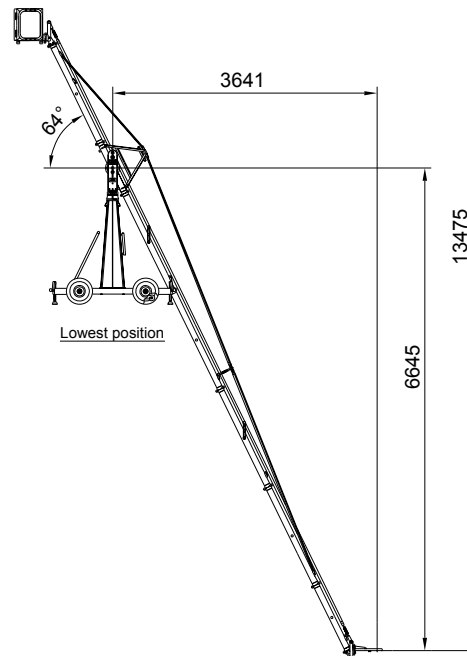
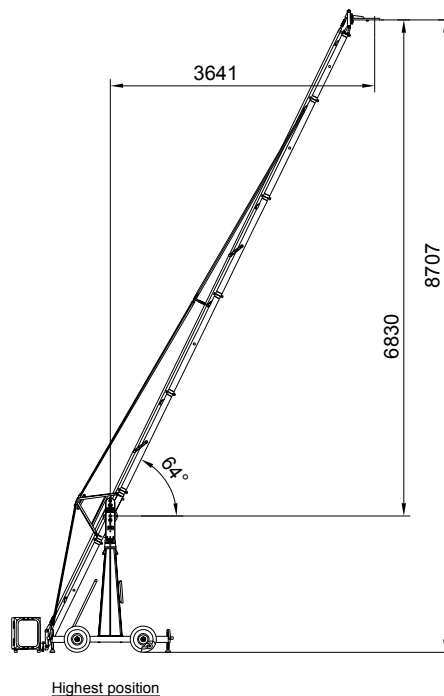
Datenblatt- Nr.:

D100-V1a-100-D

	Name	Datum	Index	Datum	Name	Zugehörige Zeichnungs-Nr.:
Erstellt	Trautwig	15.05.03	a	02.09.03	Trautwig	--
Geprüft						



Dolly (Dimensions are the same in all versions)



All measurements are mm !

Pivot height 1877 mm

Rear extension arm required 1500 mm

Front extension arms required	4x1500 mm	Transport height of middle section, assembled	2127 mm
	1x1000 mm	Transport height of rigging harness assembled	ca.2393 mm
	--	Counterweight required to balance empty arm	6x14kg=84kg
Rear extension arm required	1x 1500 mm	Max. lift capacity (Working load)	30 kg
Total lift range	13475 mm	Counterweight required vor max. load	16x14kg= 224 kg
Maximum height	8707 mm		
Arm reach (pivot to camera head mount)	7851 mm	Dolly weight	112 kg
Length of rear end (pivot to outside of weight bucket)	2476 mm	Crane weight (excluding dolly and weights)	128 kg
Pivot height	1877 mm	Transport weight excluding counterweight	240 kg



GF-9 Specifications

Version 8/150 D

Datenblatt-Nr.:

D140-V8e-150-D

Name	Datum	Index	Datum	Name
Erstellt	Trautwig	15.05.03	d	19.03.04
Geprüft			e	13.04.05

Zugehörige Zeichnungs-Nr.:

--