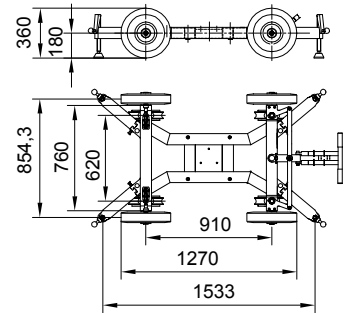
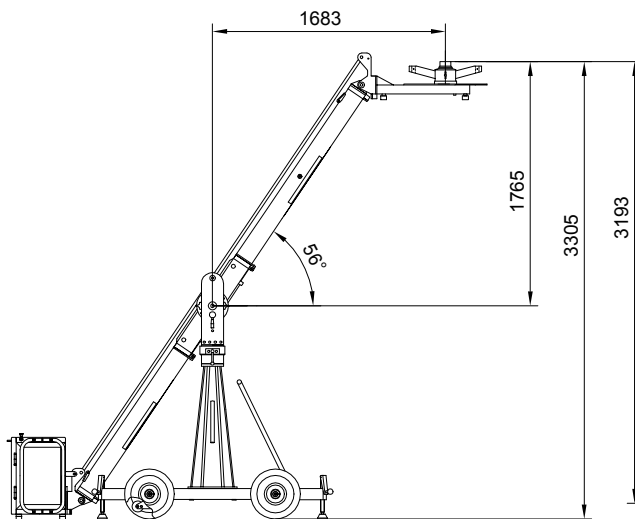


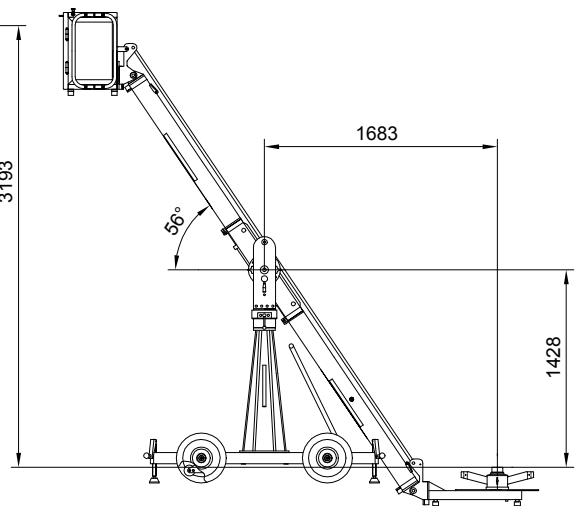
Horizontal position



Dolly (Dimensions are the same in all versions)



Highest position



Lowest position

Pivot height 1540 mm

Rear extension arm required 1270 mm

All measurements are mm !

Front extension arms required	1x1500 mm	Transport height of middle section, assembled	1780 mm
	--	Transport height of rigging harness assembled	--
	--	Counterweight required to balance empty arm	1,5 auf Plattform
Rear extension arm required	1x1270 mm	Max. lift capacity (Working load) (2 pers.+accessories)	250 kg
Total lift range	3193 mm	Counterweight required vor max. load	276 kg
Maximum height	3305 mm		
Arm reach (pivot to camera head mount)	2531 mm	Dolly weight	112 kg
Length of rear end (pivot to outside of weight bucket)	2200 mm	Crane weight (excluding dolly and weights)	149 kg
Pivot height	1540 mm	Transport weight excluding counterweight	261 kg



## GF 8-Specifications

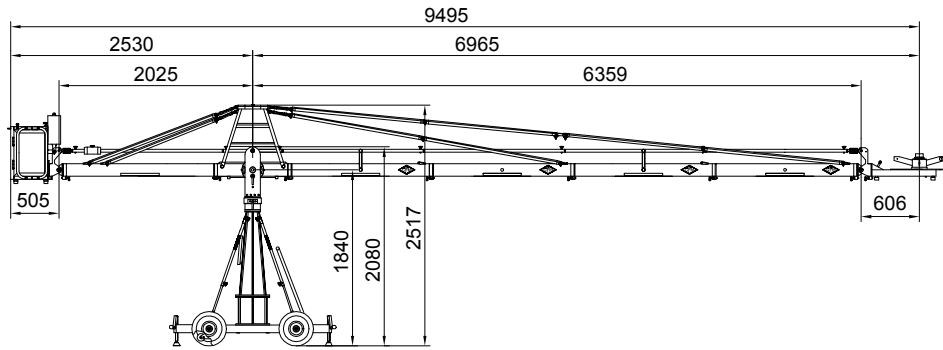
### Version 1

Datenblatt- Nr.:

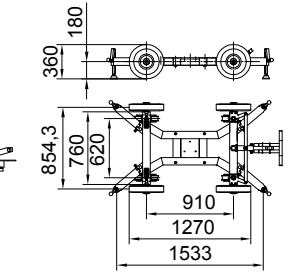
D140-V1c

Name	Datum	Index	Datum	Name	Zugehörige Zeichnungs-Nr.:
Erstellt	Trautwig	07.01.03	b	18.03.05	Trautwig
Geprüft			c	19.09.05	Trautwig

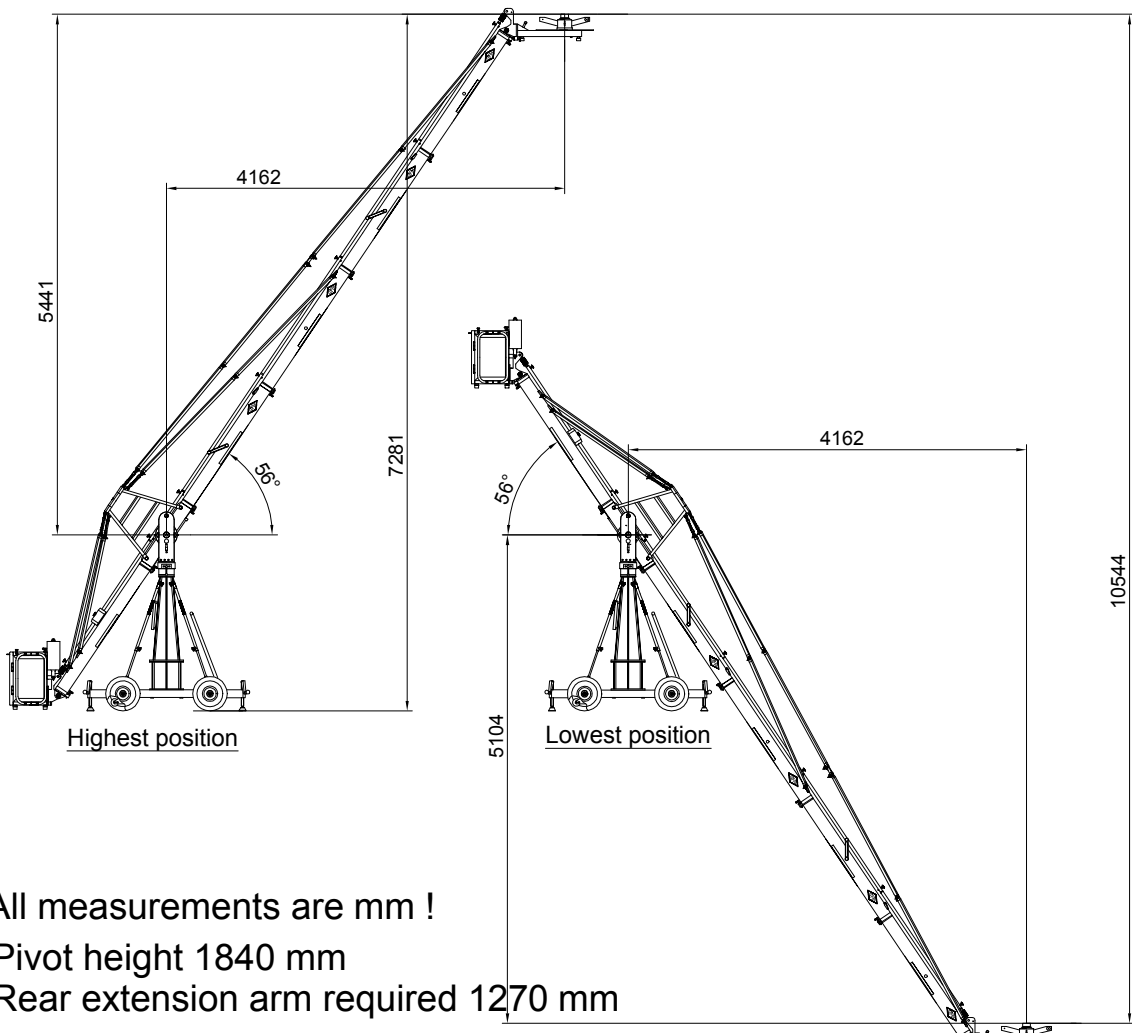
--



Horizontal position



Dolly (Dimensions are the same in all versions)



Highest position

Lowest position

All measurements are mm !  
 Pivot height 1840 mm  
 Rear extension arm required 1270 mm

Front extension arms required	4x1500 mm	Transport height of middle section, assembled	2080 mm
	--	Transport height of rigging harness assembled	2517 mm
	--	Counterweight required to balance empty arm	11x14 kg =154 kg
Rear extension arm required	1x 1600 mm	Max. lift capacity (Working load) (1 pers.+accessories)	140 kg
Total lift range	10544 mm	Counterweight required vor max. load	42x14 kg+ 1x8 kg+ 1x4 kg=600 kg
Maximum height	7281 mm		
Arm reach (pivot to camera head mount)	6965 mm	Dolly weight	112 kg
Length of rear end (pivot to outside of weight bucket)	2530mm	Crane weight (excluding dolly and weights)	246 kg
Pivot height	1840 mm	Transport weight excluding counterweight	358 kg



## GF 8-Specifications

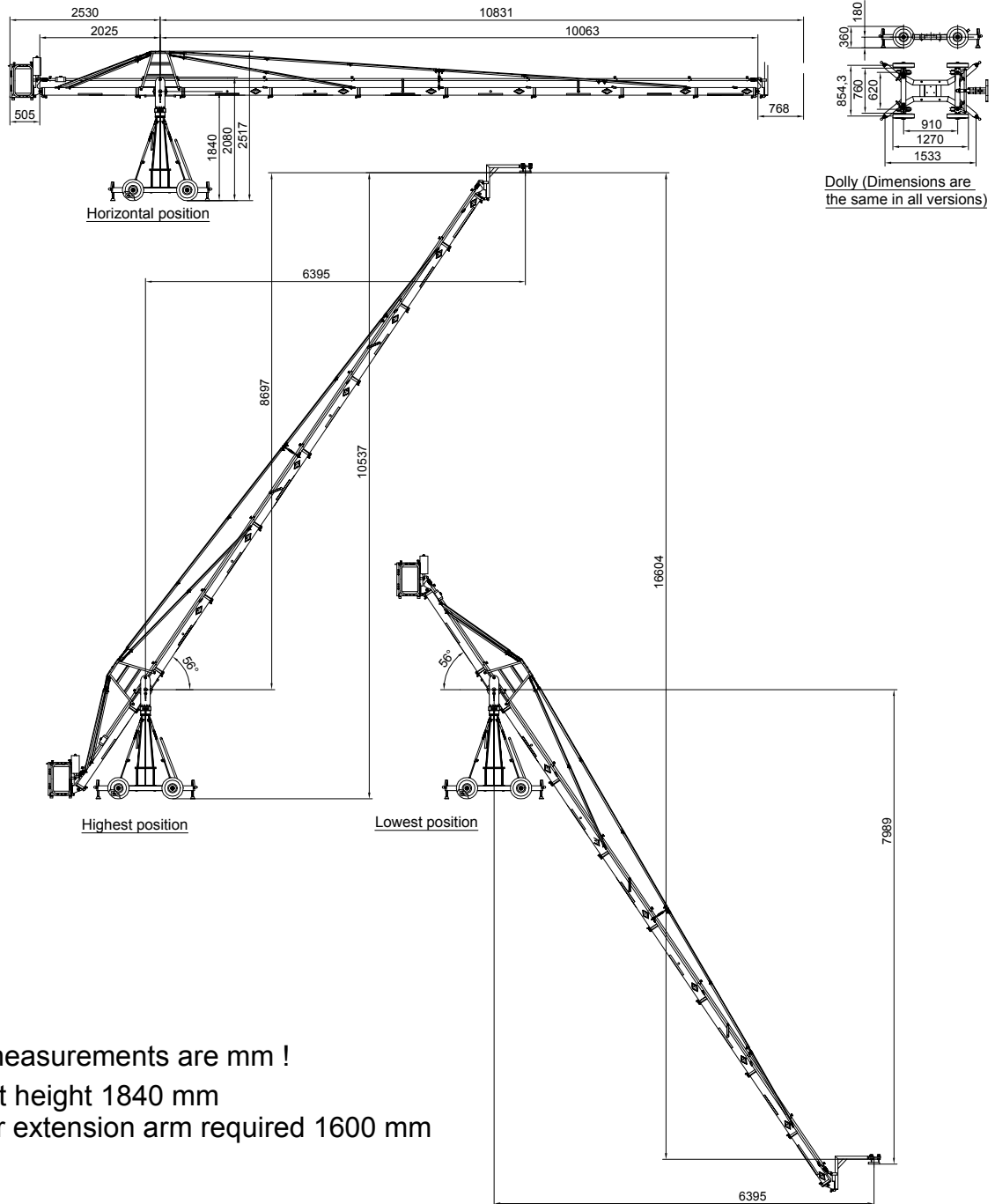
Version Xten 4

Datenblatt- Nr.:

D140-VXT4a

	Name	Datum	Index	Datum	Name
Erstellt	Trautwig	10.05.06	a	16.08.06	Trautwig
Geprüft					

Zugehörige Zeichnungs-Nr.:



All measurements are mm !  
 Pivot height 1840 mm  
 Rear extension arm required 1600 mm

Front extension arms required	5x1500 mm	Transport height of middle section, assembled	2080 mm
	1x1270 mm	Transport height of rigging harness assembled	2517 mm
	1x1000 mm	Counterweight required to balance empty arm	25x14 kg= 350 kg
Rear extension arm required	1x 1600 mm	Max. lift capacity (Working load)	50 kg
Total lift range	16604 mm	Counterweight required vor max. load	43x14 kg= 602 kg
Maximum height	10537 mm		
Arm reach (pivot to camera head mount)	10831 mm	Dolly weight	112 kg
Length of rear end (pivot to outside of weight bucket)	2530 mm	Crane weight (excluding dolly and weights)	282 kg
Pivot height	1840 mm	Transport weight excluding counterweight	394 kg



## GF 8-Specifications

Version Xten 8

Datenblatt- Nr.:

D140-VXT8a

Name	Datum	Index	Datum	Name
Erstellt	Trautwig	10.05.06	a	16.08.06/Trautwig
Geprüft				

Zugehörige Zeichnungs-Nr.: